



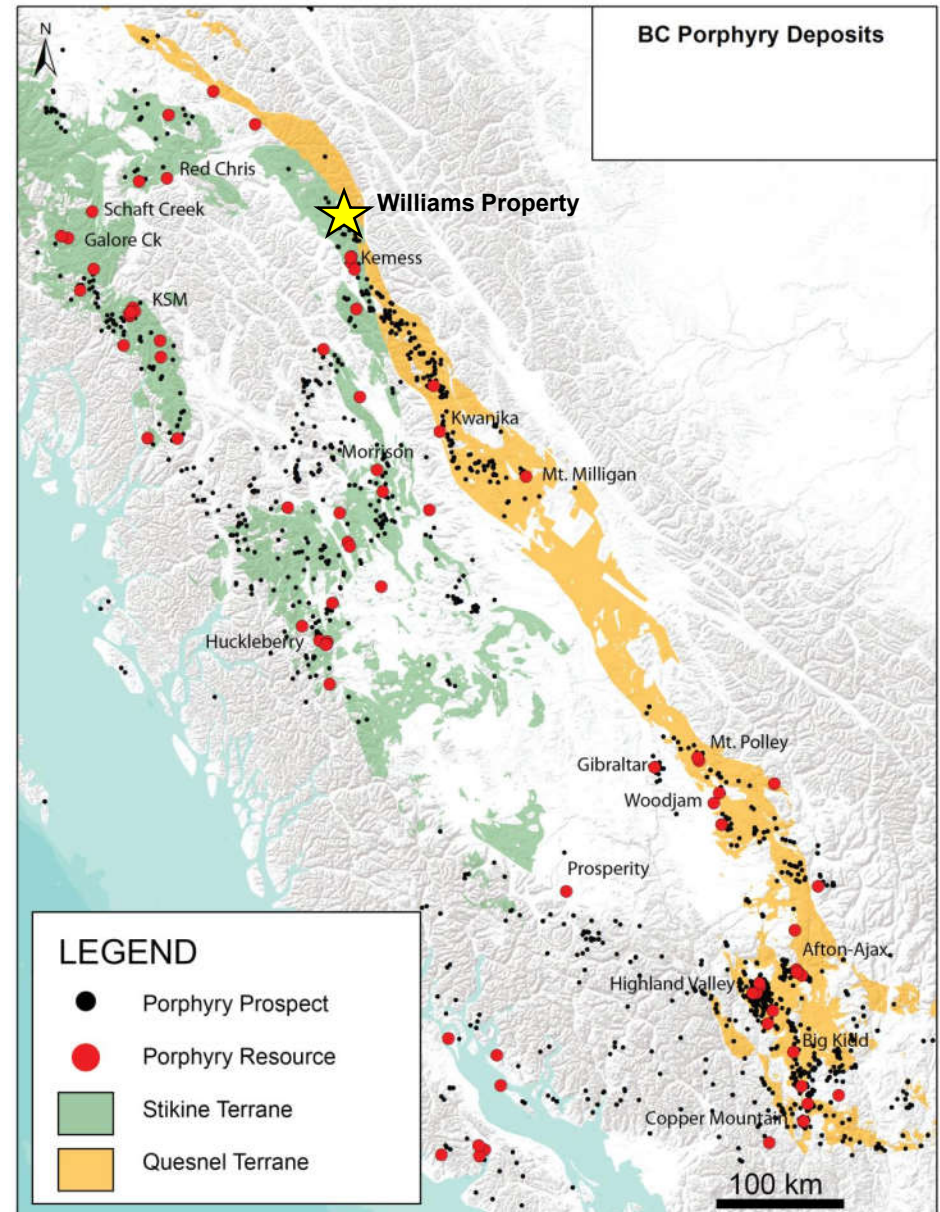
**Strategically positioned on-trend with the
Kemess Copper mine, Toodoggone, BC**

**Bulk Tonnage Gold
Copper Porphyry**

**TSX.V: ISS TC: ISSFF
internationalsamuelexploration.com**

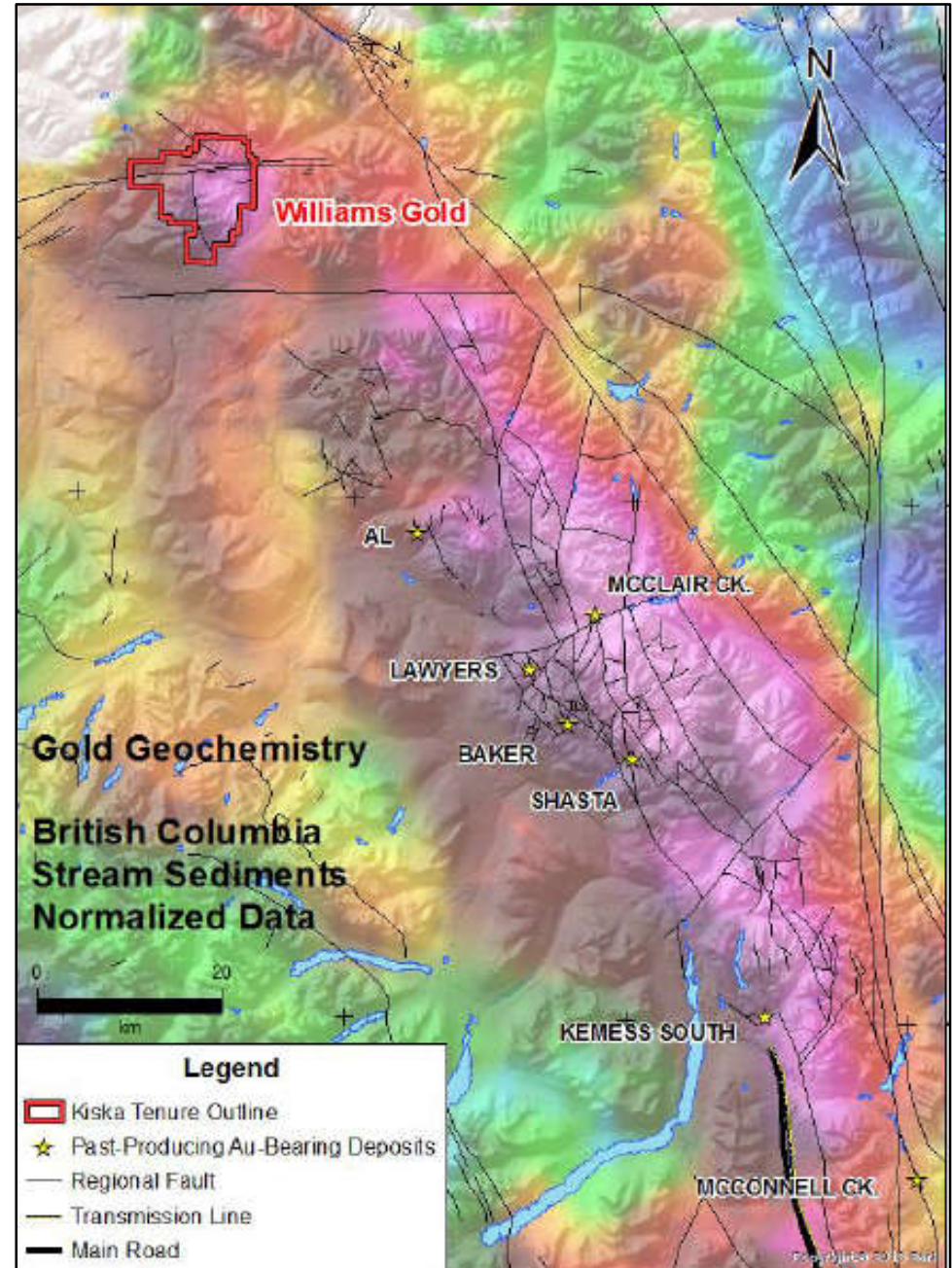
Williams, Bulk Tonnage, Gold Copper Porphyry

- Three distinct targets, T-Bill Bulk Tonnage Prospect, GIC Porphyry Prospect, and Gossan areas
- The **T-Bill Prospect** is 300 x 300 m area intersected 11 separate 2 m intercepts containing in excess of 12g/t Au Bulk tonnage potential indicated by intercepts averaging 1.09g/t Au over 74.8 m and another averaging 1.15g/t Au over 148.7 m. Mineralization open in multiple directions – Drill ready. Visible gold is noted in most high-grade samples 4 rock and core samples that exceeded 5000 ppb Au on initial analysis were subjected to metallic screen assaying. Three of the four samples showed coarse gold to be a significant factor, with the grade increasing by 22 to 113%.
- **GIC Porphyry Prospect** 1800 m wide chargeability and resistivity anomaly, Northern IP anomaly margin overlaps Cu and Au soil anomaly. Southern IP boundary marked by chip sample of 0.22% Cu and 0.22 g/t Au over 3.73 m.
- **Gossan Prospect** Under investigated gossans area with elevated copper values.

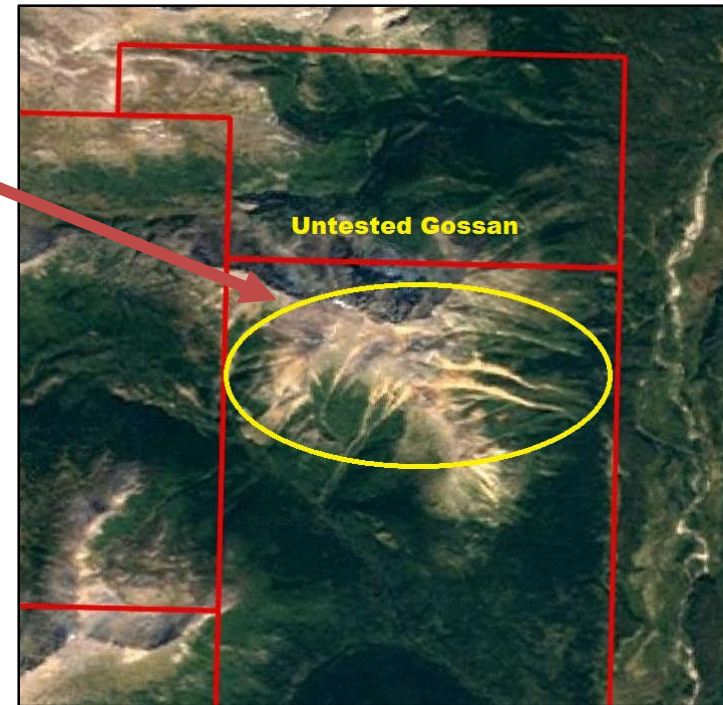
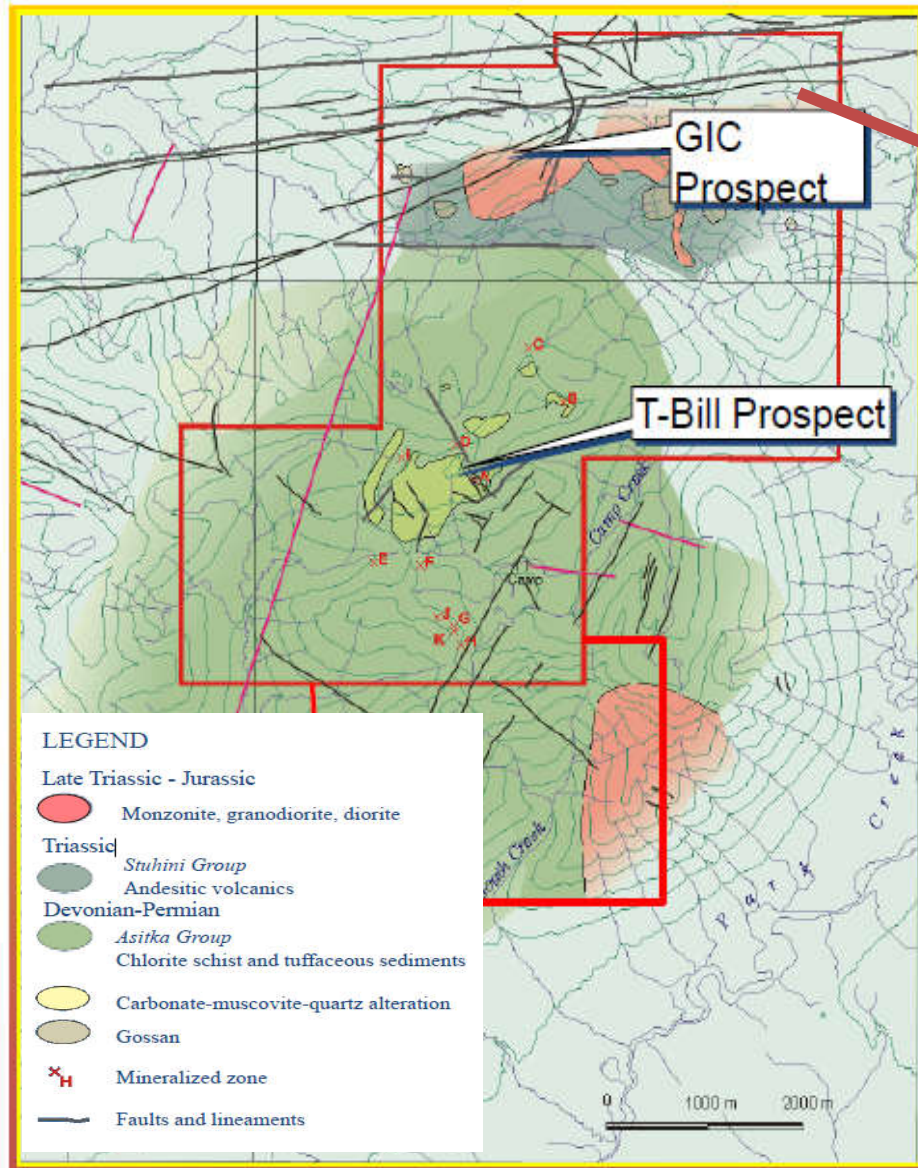


Williams Property Map

- North of Toodoggone Mining Camp
- On trend and northwest of Kemess Mine which Centerra purchased for \$310-million .
- Located between the Williams property and Centerra Gold Inc. acquisition is Amarc Resources Ltd.'s Joy project
- Belt of Cu-Au porphyry and epithermal Au-Ag deposits
- Kemess South: recently closed open-pit porphyry deposit; Centerra is currently exploring Kemess North for block cave development.
- Lawyers (previous producer), Baker, Shasta are past-producing epithermal gold deposits.



2 main targets identified to date T-Bill (Bulk Tonnage Gold) and GIC (Porphyry Copper) Prospects



Fully Permitted (until 2022)
Drilling
Geophysics
Camp

The Neighbourhood

Williams Gold Intervals

Lawyers Mine 2018-19

Historic T-Bill Drill Hole Gold Intervals

Recent Gold Intervals (2018-19 Drill results)

	03-10
	7.7g/t 2.0 m,
	12.8g/t 1.6 m, 12.7g/t 0.6 m
83.1	
12.50 g/t 2.0 m	84-2
83-2	15.6g/t 2.0 m
35.0g/t 2.0 m	10.3g/t 3.5 m
7.2g/t 4.0 m	84-3
83-6	5.5g/t 2.0 m
11.0g/t 4.0 m	84-4
13.8g/t 2.0 m	25.6g/t 0.5 m
	84-5
	24.7g/t 1.5 m
	84-7
	15.50 g/t 1.5 m
	84-8
	24.8g/t 2.0m

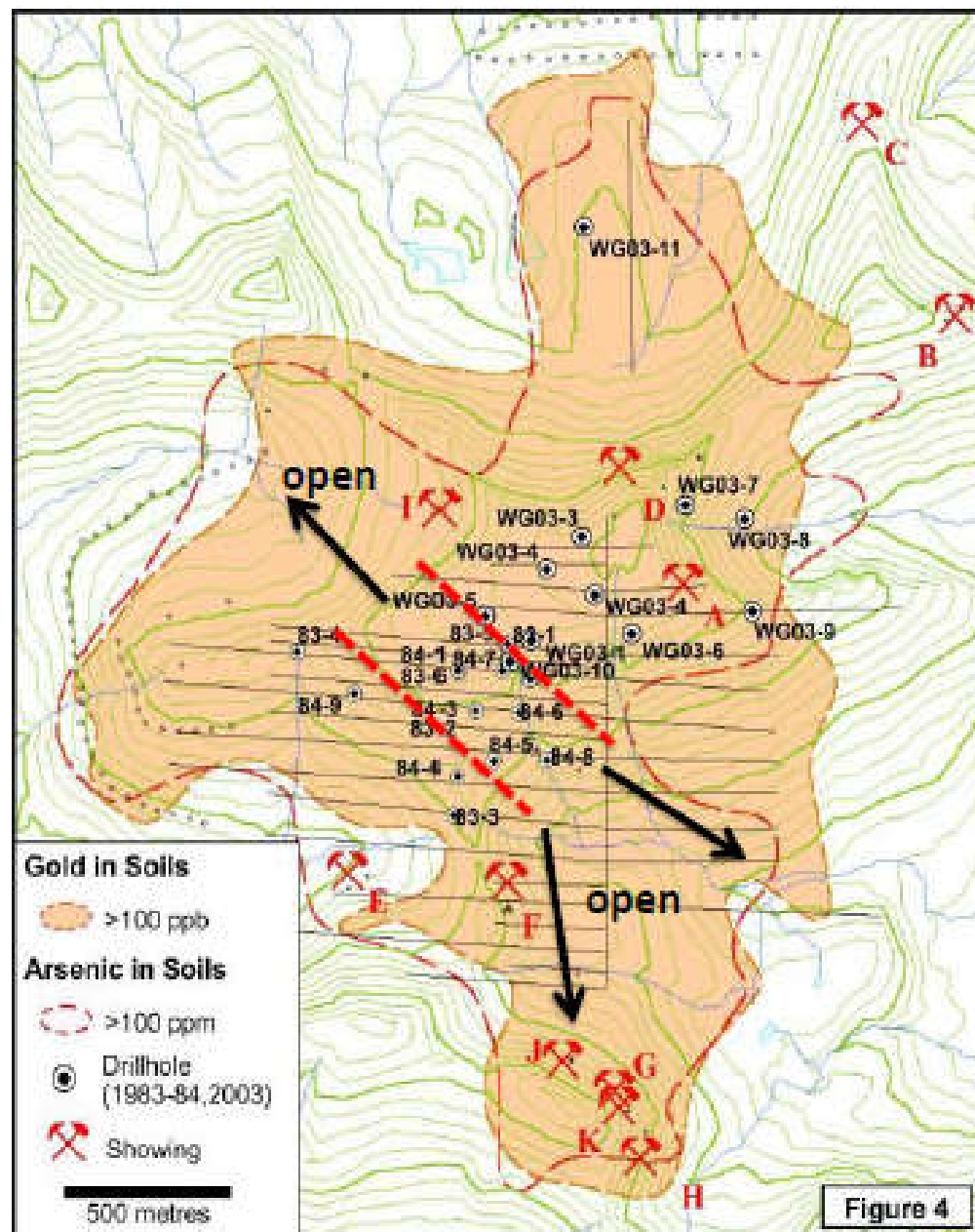
19AGBD007		18PXDD001
3.61 g/t 8.0 m		21.80 g/t 1.14 m
1.72 g/t 1.0 m		18PXDD002
30.2 g/t 2.95 m		18.43 g/t 1.81m
6.01 g/t 14.95 m		18DRRC010
1.84 g/t 12.0 m		52.02 g/t 3.05m
19PXDD001		18DRRC009
46.9 g/t 2.87 m		5.26 g/t 3.05 m
5.37 g/t 7.0 m		18DRRC010
2.01 g/t 2.65 m		10.45 g/t 1.52 m
11.73 g/t 3.6 m		52.05 g/t 3.05 m
4.69 g/t 11.5 m		18PXRC001
19AGBDD002		1.36 g/t 4.57 m
1.84 g/t 6.0 m		18PXRC002
19CCDD001		0.71 g/t 4.57 m
11.73 g/t 4.40m		6.39 g/t 6.95m

The Lawyers Mine is a past producer. The 2018-19 gold results are being evaluated or a future restart.

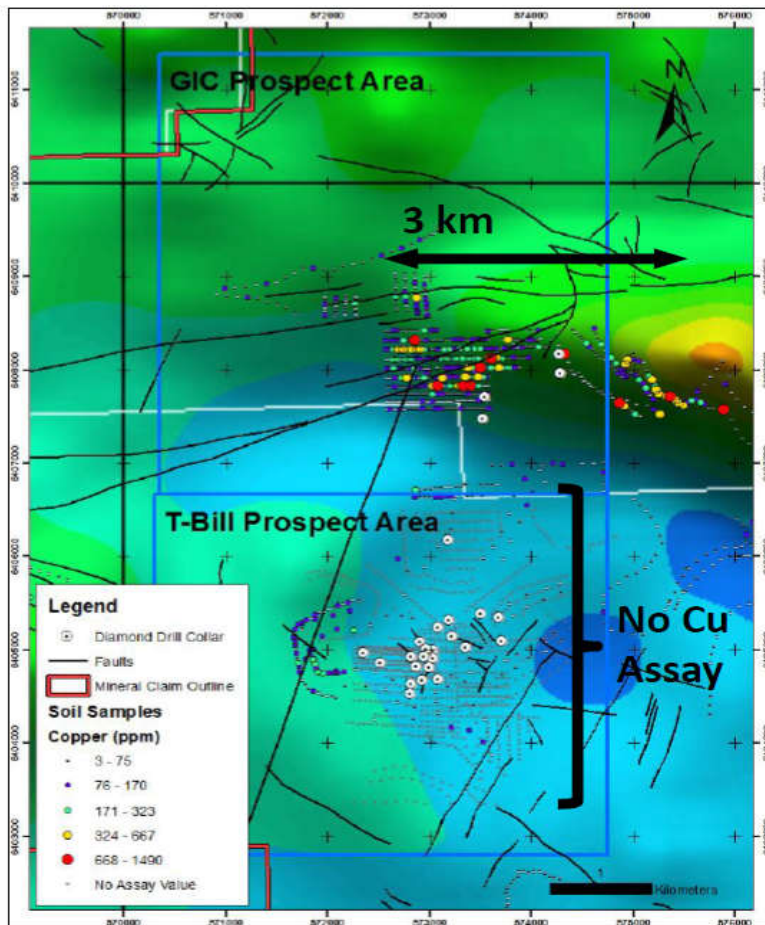
Both similar trend, geologic setting, and multiple high grade gold veins

T-Bill Bulk Tonnage Prospect

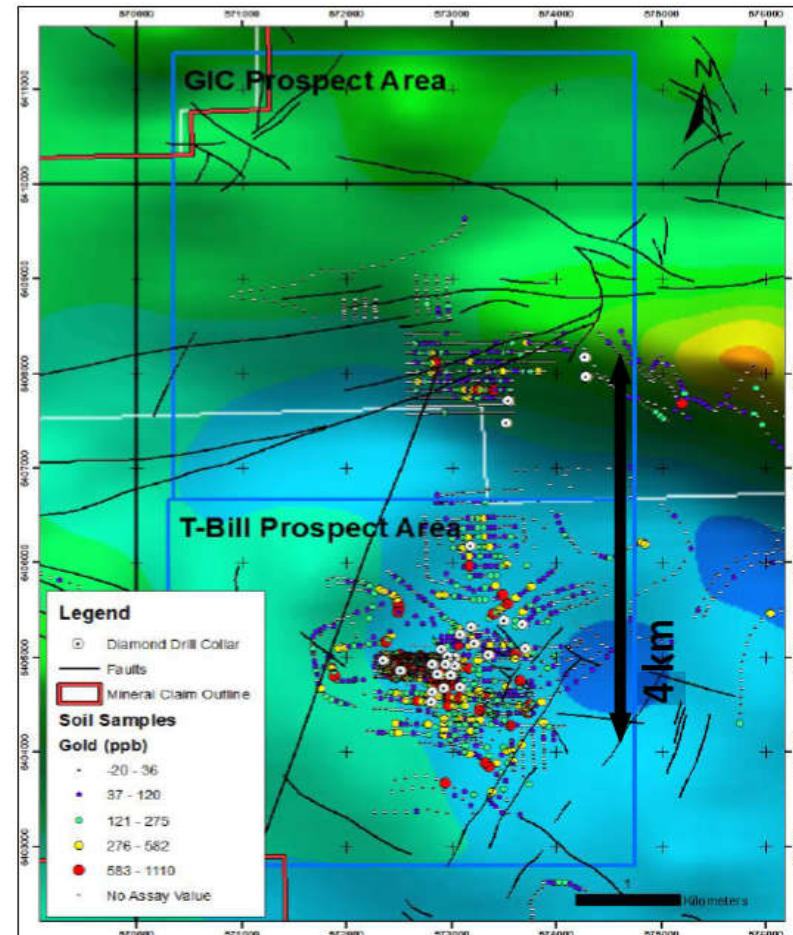
- 3 x 2 km Au (>100 ppb) and As (>100 ppm) soil anomaly
- Coincident with muscovite-carbonate-quartz alteration of chlorite schists that are pervasive over a 1.2 by 1.3 km central core
- Alteration is typical of halos to Au-mineralized quartz veins
- **Visible gold** is noted in most high grade samples
- Four rock and core samples that exceeded **5000 ppb Au** on initial analysis were subjected to metallic screen assaying. Three of the four samples showed **coarse gold** to be a significant factor, with the grade **increasing by 22 to 113%**
- Six interpreted NW trending Qtz–Asp–Au vein corridors associated with Fe–carbonate alteration
- Consists of eleven separate 2 m intercepts > 12 g/t Au, and three separate 1.5 m intercept >24 g/t Au
- WG03-10 is the only drill hole drilled to intersect this mineralization in the correct orientation



Copper in Soils on GIC Prospect

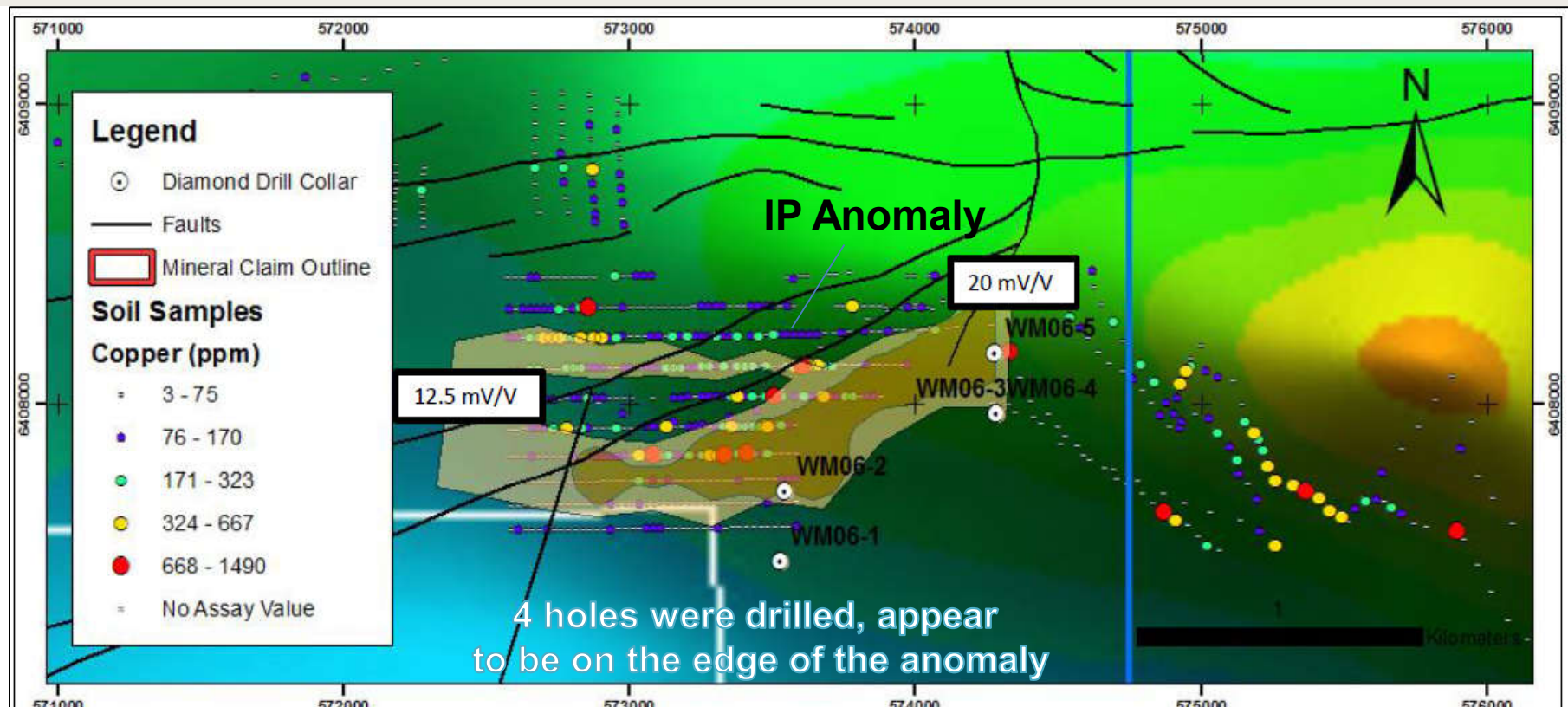


Gold in Soils



- 3 km long (open in 3 directions) Copper Soil Anomaly in the GIC Prospect
- Gold in Soils over 4 km in length.

GIC Porphyry Copper



- 1800 m x 500 m wide chargeability and resistivity anomaly
- Northern IP anomaly margin overlaps Cu and Au soil anomaly.
- Southern IP boundary marked by chip sample of **0.22% Cu and 0.22 g/t Au over 3.73 m**
- “Golden Triangle” aged magmatism and untested Cu-in-soil anomalies on margin of strong IP anomaly
- Needs follow-up geological work (alteration mapping, extend soil surveys).
- New interpretation indicates the historical drilling was on the edge of the IP anomaly (GPS locations inconsistent?) Possibly Drilled in the wrong place 250 m south and 150 m east of actual porphyry target?

Proposed Budget for Williams Property

Fully Permitted for Drilling/IP/Camp

GIC Porphyry

- Excellent copper and gold values in soils have not be tested.
- Recommend a comprehensive soil geochem program, followed up by induced polarization geophysical survey covering historical and extension areas.
- Strong indication of porphyry mineralization

T-Bill

- Infill drilling to test continuity
- Step-out drilling to test on-strike potential of geochemical anomaly

Diamond Drilling (all-in)	\$ 552,000
Line cutting/Geophysics	87,400
Field Personnel	87,875
Equipment Rentals	34,890
Fixed-Wing Aircraft	40,000
Helicopter	236,200
Chemical Analyses	26,571
Camp and Support	71,470
Report	15,000
Contingency (10%)	115,141
Project Supervision	113,324
Total \$1,379,871	

Thank you.

International Samuel Exploration Corp.

Suite 888 – 700 West Georgia Street
Vancouver BC V7Y 1G5

Phone Number: 604 317 3090 Conrad Swanson
Email Address: Conradkswanson@gmail.com
www.internationalsamuelexploration.com